

# Energizing Your Future

with CMAC

**April 9, 10 and 11  
Palm Springs, CA**

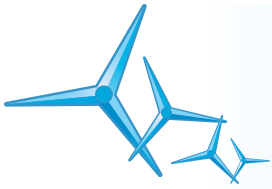


## **CMAC 2008 SPRING CONFERENCE Palm Springs, California**

CMAC Southern Program Committee Chair Scott Drolet and the Program Committee have put together an exciting and informative program for our 2008 Spring Conference which will be held Wednesday through Friday, April 9-11, 2008 at the Doral Desert Princess Resort located in world-famous Palm Springs, California.



**CEMETERY AND MORTUARY  
ASSOCIATION OF CALIFORNIA**  
Formerly the Interment Association of California



# Program of Activities

Please note the room locations are printed to the right of the event name, A map of the room locations is on the back of the program

## Wednesday, April 9, 2008

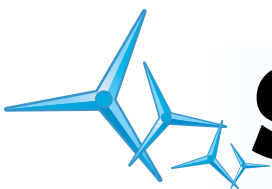
- 8:30 am – 2:30 pm Jack West Memorial Golf Tournament (Shot-gun Start)  
12:00 pm – 5:00 pm Vendor Display Set-up  
4:00 pm – 5:00 pm CISA Board of Directors Meeting  
5:00 pm – 6:00 pm CMAC Board of Directors Meeting  
6:00 pm – 7:30 pm Opening Reception

## Thursday, April 10, 2008

- 7:30 am – 9:00 am Breakfast Buffet  
8:15 am – 9:00 am Vendor/Associate Member Introductions  
9:00 am – 1:00 pm Guest Breakfast and Tour  
9:00 am – 12:30 pm General Session  
12:30 pm – 2:00 pm Luncheon  
2:00 pm – 4:45 pm General Session  
5:00 pm – 5:45 pm President's Meeting with Suppliers  
6:00 pm – 9:00 pm Reception and Dinner

## Friday, April 11th, 2008

- 8:00 am – 9:00 am Breakfast Buffet  
9:00 am – 11:00 am Legislative Update and General Session  
11:00 am – 1:00 pm Vendor Display Take-down



# Speakers



**Kimberly Kenney,**  
*Curator William McKinley Presidential Library  
& Museum  
Canton, Ohio*

Kim Kenney earned her Master of Arts degree in History Museum Studies at the Cooperstown Graduate Program. Kim has interned at the Rome Historical Society in her hometown of Rome, NY; Wells Fargo Historical Services in San Francisco; and the Senator John Heinz Pittsburgh Regional History Center in Pittsburgh, PA. She has also worked as an interpreter at the Erie Canal Village

in Rome, NY. She served as Curator of Collections at the Historical Society of Rockland County in New City, NY before taking the position of Curator at the Wm. McKinley Presidential Library & Museum in October 2001.

**Topic of Presentation: Unlocking the Secrets of the Cemetery**



**Sherrie Moffet-Bell, Invited**  
*Chief, California Cemetery and Funeral  
Bureau  
Sacramento, CA*

Governor Schwarzenegger named Ms. Moffet-Bell as Bureau Chief in December of 2004. Previously, she served as Deputy Chief of the Bureau of Security and Investigative Services (BSIS), where she was responsible for the management of all operational matters, including licensing and enforcement activities. She has also been responsible for the management and coordination of such successful

projects as electronic interface with the California Department of Justice and the development of online licensing applications.

**Topic of Presentation: Bureau Update**



**Fred Miller,**  
*President , Memorial Business Systems  
Nashville, Tennessee*  
Memorial Business Systems is a cemetery management and mapping software company in Nashville, TN. Fred is also a former President and CEO of Pensacola Memorial Gardens and Funeral Home in Pensacola, Florida, and was involved with PMG for nearly a quarter of a century. During that time and after, he has played a very significant role in the death care industry as a Past-President of the International Cemetery, Cremation, and Funeral

Association (ICCFA); a former member of the ACA and ICFA Board of Directors (fifteen years); and former chairman of the ICCFA's Strategic Planning Committee (eight years). Through his experiences in the death care industry, Dr. Miller learned the intricacies and nuances of all aspects of the cemetery business and directly encountered the multiple challenges of operating a cemetery.

**Topic of Presentation: Techno-Synergy for Cemeteries That Are Ready For It**



**Jerry Desmond, Jr.**  
*Executive Vice-President CMAC  
Sacramento, CA*  
CMAC Executive Vice President Jerry Desmond, Jr., will provide our attendees with a timely update on the status of legislation impacting the industry in which the CMAC has been engaged during the past session. Mr. Desmond will provide an overview of the political situation in the State Capitol, as well as specific bills that are of interest to the industry.

**Topic of Presentation: Legislative Update 2008**



**Dave Worker,**  
*Director of Cemetery Operations Rose Hills  
Memorial Park & Mortuary  
Whittier, CA*

Dave Worker is Director of Cemetery Operations and Park Superintendent for Rose Hills Memorial Park and Mortuary in Whittier. He has been with Rose Hills since 1989 and, before exchanging suits for boots in 2001, spent time as a staff accountant and an administrative manager involved with sales processing, records, mapping and other support operations.

Dave will illustrate the Park's daily routine and share some of the operational realities of performing 9,000 interments a year on a 1,600 acre property.

**Topic of Presentation: Cemetery Operations**



**Dave Bishop,**  
*McCleskey Mausoleum Associates  
Norcross, GA*  
Dave is the Senior Executive Vice President, Sales, for McCleskey Mausoleums. McCleskey is entering it's 48th year of service to the cemetery & funeral industry. Dave has been with McCleskey since 1982. He retired from the United States Air Force after completing 21 years of dedicated service to our country. Dave is past president of the Mid America Cemetery Supply Association and has spoken at several state and national conventions.

Dave is responsible for the development and implementation of successful mausoleum construction and sales programs throughout the United States.

**Topic of Presentation: Marble & Granite, Imported or Domestic? Where To Use The Correct Material**



**Mark Krause,**  
*President, Krause Funeral Homes and Cremation Service  
Milwaukee, WI*  
Mark Krause is President of Krause Funeral Homes and Cremation Service in Milwaukee, Wisconsin, which serves 1,200 families annually at 4 locations, including its Informed Choice lower-cost alternative.

Mark is a fourth-generation funeral director who has been in funeral service since 1976. Mark has spoken at numerous organizations, churches, schools, and universities on a variety of topics that range from grief issues to the functioning of funeral homes.

Mark has been an educator at the National Foundation of Funeral Service and is also one of the creators of Wisconsin's first Preneed Counselor Certification Program.

Mark is a founder and Past-President of the Funeral Service Alliance of Wisconsin. He is also the Past-President of Preferred Funeral Directors, International and is President-Elect of the International Cemetery, Cremation and Funeral Association [ICCFA].

**Topic of Presentation: Cremation Ethics and Best Practices**



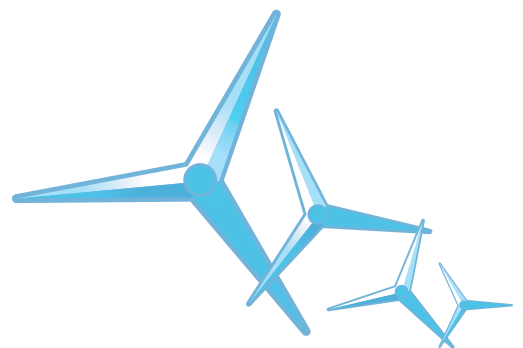
**Suzanne Davidson**  
Suzanne Davidson is a California attorney who has been employed in Forest Lawn's Legal Department for 17 years. She received her bachelor degree from the University of California at Berkeley and her law degree from the University of California at Los Angeles. Her practice is concentrated in the areas of cemetery and mortuary operations, real estate, construction and environmental law.



**Dennis W. Madison**  
A Southern California native, Dennis Madison received both his Bachelor's degree in Civil Engineering and a Master's in Environmental and Occupational Health from California State University at Northridge.

As Forest Lawn's Environmental Compliance Manager, Dennis is responsible for ensuring compliance with environmental health and safety regulations, which primarily includes the areas of air quality, water quality, waste management, land use, and safety.

A Registered Environmental Health Specialist with the State of California, Dennis also is a current member of the Air and Waste Management Association, the California Environmental Health Association, and holds two certificates in Hazardous Materials and Waste Management.



## CMAC 2008 Southern Program Committee

**Scott Drolet,**  
Committee Chair  
Forest Lawn Memorial-Parks & Mortuaries,

**Kevin Brown,**  
Inglewood Park Cemetery

**Terri Gonzalez,**  
Ivy Lawn Memorial Park

**Dave Hepburn,**  
States West Cemetery Services,

**Merrill Mefford,**  
Rose Hills Company

**Gerald Nash,**  
Mountain View Cemetery

**Marcia Nixon,**  
Crystal Cathedral Memorial Gardens

**John Resich, Jr.,**  
Green Hills Memorial Park

**Steve Schacht,**  
SCI-California Funeral Services

**Mike Wesner,**  
The Catholic Cemeteries of Orange County

## CMAC 2008 Spring Conference Sponsors

Please join us in thanking the following members who are sponsoring our conference:

**Forest Lawn Memorial -  
Parks & Mortuaries**  
John Llewellyn

**Permeco**  
Mark Carson

**Alta Mesa Memorial Park**  
Marilyn Talbot

**States West  
Cemetery Services**  
Dave Hepburn

**Arcadian Memorial Products**  
Fred Crook

### Spouse and Guest Breakfast & Tour

Spouses and guests of our conference attendees are invited to participate in our Special Spring Conference Guest Breakfast & Tour.

### Jack West Memorial Golf Tournament

The CMAC Golf Committee Chair, Kevin Brown, has made arrangements for golf on Wednesday, April 9, 2008. The shotgun start is at 8:30 am. Lunch is included.

### Doral Golf Resort

The Desert Princess Country Club makes Doral a premier Palm Springs golf resort, with 27 holes of championship PGA-rated golf. These three 9-hole courses and the driving range are situated on rolling, green fairways amid the resort's beautiful landscaping.



## **Board of Directors Cemetery and Mortuary Association of California**

### **President**

#### **Marilyn Talbot**

*Alta Mesa Memorial Park*  
695 Arastradero Road  
Palo Alto, CA 94306  
(650) 493-1041  
(650) 493-0247 F  
mtalbot@altamesacemetery.com

### **Secretary**

#### **John F. Llewellyn**

*Forest Lawn Memorial - Parks & Mortuaries*  
1712 S. Glendale Avenue  
Glendale, CA 91205  
(800) 204-3131  
(323) 254-8152 F  
jllewellyn@forestlawn.com

### **Chief Financial Officer**

#### **Ken Varner**

*Cypress Lawn Cemetery Association*  
1370 El Camino Real  
Colma, CA 94014  
(650) 755-0580  
(650) 994-3317 F  
kvarner@cypresslawn.com

### **President Elect**

#### **Terri Gonzalez**

*Ivy Lawn Cemetery*  
5400 Valentine Road  
Ventura, CA 93003  
(805) 642-1055  
(805) 642-8648 F  
ivylawn@yahoo.com

### **Northern Region - Vice President**

#### **Jeff Lindeman**

*Mountain View Cemetery*  
5000 Piedmont Avenue  
Oakland, CA 94611  
(510) 658-2588  
(510) 652-2726 F  
jeff@mountainviewcemetery.org

### **Southern Region - Vice President**

### **Vacancy**

### **Immediate Past President**

#### **John Resich, Jr., Esq.**

*Green Hills Memorial Park*  
27501 South Western Avenue  
Rancho Palos Verdes, CA 90275  
(310) 832-2618  
(310) 832-0388 F  
jresich@aol.com

## **Board of Directors Northern California**

#### **Scott Atherton**

*Turlock Memorial Park*  
425 N. Soderquist Road  
Turlock, CA 95380  
(209) 632-9111  
(209) 632-1492 F  
satherton@turlockmemorialpark.com

#### **Andy Bryant**

*Lifemark Group*  
32992 Mission Boulevard  
Hayward, CA 94544  
(510) 441-5596  
(510) 429-1029 F  
abryant@lifemarkgroup.com

#### **Steve Doukas**

*Commerce Holding Company, Inc.*  
PO Box 333  
Colma, CA 94014  
(650) 755-6939  
(650) 755-6109 F  
sdoukas@aol.com

#### **Judy Edmonson**

*Hills of Eternity Memorial Park/  
Home of Peace Cemetery*  
1299 El Camino Real  
Colma, CA 94014  
(650) 755-4700  
(650) 756-4731 F  
jedmonson@emanuelsf.org

#### **George B. Estes**

*Valley Memorial Park*  
650 Bugeia Lane  
Novato, CA 94945  
(415) 897-9609  
(415) 892-6296 F  
gbestes@valleymemorialpark.com

#### **Chuck Irwin**

*Cherokee Memorial Park, Inc.*  
PO Box 1000  
Lodi, CA 95241  
(209) 334-9613  
(209) 334-5308 F  
cirwin@cherokeememorial.com

#### **Michael Klinger**

*Sunset View Cemetery Association*  
PO Box 187  
El Cerrito, CA 94530  
(510) 525-5111  
(510) 527-5484 F  
novl@aol.com

#### **Peter Manasse**

*Tulocay Cemetery -  
Funeral Home - Crematory*  
PO Box 7  
Napa, CA 94559  
(707) 252-4728  
(707) 252-8375 F  
peterm@saber.net

## **Board of Directors Southern California**

#### **Bud Christian**

*Bellevue Memorial Park*  
1240 West G Street  
Ontario, CA 91762  
(909) 986-1201  
(909) 986-3112 F  
k-b-christian@msn.com

#### **Marcia Nixon**

*Crystal Cathedral Memorial Gardens*  
12141 Lewis Street  
Garden Grove, CA 92840  
(714) 971-4138  
(714) 971-2910 F  
marcian@crystalcathedral.org

#### **Steve Schacht**

*SCI - California Funeral Services*  
14801 Beach Blvd.  
Westminster, CA 92683  
(714) 889-1055  
steve.schacht@sci-us.com

#### **Malcolm G. Smith**

*Inglewood Park Cemetery*  
720 East Florence Avenue  
Inglewood, CA 90301  
(310) 412-6500  
(310) 412-6855 F  
ipcaccess@ipcmail.org

#### **Randal Thwing**

*Santa Barbara Cemetery*  
901 Channel Drive  
Santa Barbara, CA 93108  
(805) 969-3231  
(805) 565-5691 F  
rthwing@sbccemetery.org

#### **Kent Woods**

*Rose Hills Company*  
3888 Workman Mill Road  
Whittier, CA 90601  
(562) 463-4532  
(562) 692-3842 F  
kent.woods@rosehills.com

---

### **DIRECTORS EMERITI**

#### **Benjamin Dwoskin**

*Los Angeles*

#### **Keith Hargrave**

*Fresno*

#### **Robert Hinze**

*Oceanside*

#### **Dennis Poulsen**

*Whittier*

#### **Mary Tripp**

*San Jose*

#### **Herbert O. Urban**

*Paradise*

# Things to Do, Places to Go



## **Palm Springs Aerial Tramway**

Aboard the world's largest rotating tramcar, you will experience a breathtaking journey up the sheer cliffs of Chino Canyon. Begin your 10-minute ride at the 2,643 ft. Valley Station and rise to the Mountain Station at 8,516 ft. in winter, you can cross-country ski, and snowshoe. In season, camping and guided tours are available. Enjoy spectacular views of the desert below from Peaks Restaurant or Pines Cafeteria-Style restaurant where lunch and dinner are served daily. Open year-round 10 a.m weekdays, 8 a.m weekends and holidays. Cars depart at least every half hour. Last car down is at 9:45 p.m.

Tramway Road, Palm Springs • 760-325-1449 • Recorded information: 760-325-1391 [www.pstramway.com](http://www.pstramway.com)

## **Palm Springs Art Museum**

Nationally accredited art with a vibrant theater, that would be at home in any major city, featuring fine permanent collections and top touring exhibitions, galleries, sculpture gardens, Annenberg Theater. Toor Gallery Cafe. Open Tuesday-Sunday year round except major holidays.

101 Museum Dr. Palm Springs, CA • 760-325-7186 • Recorded info 760-325-0189

[www.psmuseum.org](http://www.psmuseum.org)

## **Tranquil Touch Day Spa**

Massage therapy, facials, body treatments, scrubs, wraps, bronzing. Discount spa packages.

140 Calle Encilla, Palm Springs • 866-988-4888

## **Desert Adventures Jeep Eco Tours**

Desert Adventures invite you to hop on their Big Red Jeep and explore the infamous San Andreas Fault, a natural wonder of the world! Steep canyons dwarf you as they wind through the torturous terrain created by the awesome power of the San Andreas Fault. This adventure is perfect for kids 6 to 106!

74-794 Lennon Place, Suite A, Palm Desert, CA 92260

760- 340-2345 • 888-440-JEEP(5337) Toll Free • [www.red-jeep.com](http://www.red-jeep.com)

## **The Living Desert Zoo And Gardens**

1,200 acre wildlife and botanical park, featuring rare and endangered desert animals and African wildlife, hiking trails, picnic areas, cafe and gift shop. Shaded and misted areas throughout the park. Open daily year round, except December 25.

47-900 Portola Ave, Palm Desert/Indian Wells • 760-346-5694 • [www.livingdesert.org](http://www.livingdesert.org)

## **St. James at the Vineyard & Icon Bar Bar, Live Music**

The Icon Bar aspect of this establishment takes advantage of the restaurant's global artifacts and objects, creating a broad, international atmosphere that's especially appreciated on weekends. A creative martini menu offers lip-smacking options, and a fantastic wine selection makes for good choosing too. Rhythmic music provides a steady beat, and many patrons find themselves compelled to dance. In addition, live music is a bar standard from Thursday to Saturday. The atmosphere is cool-chic, just like the clientele.

265 S Palm Canyon Dr, Palm Springs, CA 92262 • 760-320-8041

## **Balloon Above The Desert**

Coachella Valley is a beautiful, peaceful sight from the air, and the picturesque landscape as seen from above consists of vineyards, polo fields, golf courses, and orchards. Perks of each trip include an in-flight champagne toast and complimentary shuttle service from major desert resorts. Host Clotaire Castanier has been flying balloons professionally since 1967.

40373 Moonflower Ct, Palm Desert, CA • 760-776-5785

# CMAC 2008 Spring Conference Exhibitors

## Alexander Studio

22267 Buena Ventura Street, Woodland Hills, CA 91364  
(818) 779-7611  
Email: [mosaicart@yahoo.com](mailto:mosaicart@yahoo.com)

Since 1973, the Alexander Studio has specialized in creating and realizing artistic mosaics, mosaic niche and crypt fronts, stained glass mosaics, etched glass, statuary and woodcarvings for mausoleums, churches and other structures throughout the world in both classical and modern style. The Studio intention is to design and execute work of the highest quality, durability and longevity.

## ASCO Pacific Supply Company

25222 Broadwell Avenue, Harbor City, CA 90745  
(800) 521-1113  
[www.ascopacific.com](http://www.ascopacific.com)

Asco Pacific provides equipment and supplies to the cemetery and funeral home markets.

The company was founded in 1976 and merged with Pacific Supply Company in 1996 to form Asco Pacific Supply Company. Later that year the new company purchased California Cemetery Supply. Pacific Supply and California Cemetery Supply had each been in business for over forty years.

Asco Pacific is the source for "All" your supply needs. They provide quality products at a fair price and provide prompt courteous service.

The Asco Pacific Slogan: "One Call Does it All! When you want a product, we will provide it. If it is not a stock item, we will find it".

## American Crematory Equipment Company, Inc.

9828 Arlee Street, Santa Fe Springs, Ca 90670  
(800) 396-2254  
[www.americancrematory.com](http://www.americancrematory.com)

American Crematory Equipment Company has been manufacturing, servicing and repairing cremation equipment for over 28 years. They are the only manufacturer of both "Hot and Cold" Hearth Cremation Chambers on the West Coast. They offer complete service and repair on all makes and models 24 hours a day/7 days a week throughout the United States.

## Arcadian Memorial Products

(A Division of Quick Crete Products Corp.)  
731 W. Parkridge Avenue, Norco, CA 92860  
Mail: PO Box 639, Norco, CA 92860  
(866) 580-7461  
[www.arcadianmp.com](http://www.arcadianmp.com)

Arcadian Memorial Products, A Division of Quick Crete Products, is a manufacturer of precast concrete cemetery products and architectural site furnishings. They pride themselves in classic design, enduring quality and personalized service. "From our Family, For Your Families, Forever".

## Christy Vault Company

1000 Collins Avenue, Colma, CA 94014-3207  
(800) 229-8285  
[www.christyvault.com](http://www.christyvault.com)

Celebrating a 50-year tradition of quality and service in 1998, Christy Vault Company continues to be a leader in the manufacture of burial products. They offer a growing line of Wilbert Protective Burial Vaults and Urn Vaults. They provide effective and proven sales training for your counselors to assist in their presentation to families. The Christy Niche design, manufacture and installation capabilities are unmatched for providing with beautiful and successful niche features. Innovative product improvements have led to the development of a cover replacement warranty on all of their outer burial receptacles.

## Cold Spring Memorial Group

202 South Third Ave., Cold Spring, MN 94590  
(800) 328-5040  
[www.coldspringgranite.com](http://www.coldspringgranite.com)

Cold Spring Memorial Group is a full service company offering the following products: bronze markers, bronze on granite assembled markers, drilled granite bases, sandblast markers, granite features, altars, baptismal fonts, cremation columbaria, turnkey mausoleum construction for both garden and chapel, private estate mausoleums, granite trim and crypt fronts in a variety of colors, and design services. Cold Spring Granite Company is the world's largest granite producer and is located in Cold Spring, Minnesota.

## Conrad Pickel Studio, Inc.

418 I Avenue, Coronado, CA 92118  
(619) 435-2106  
[www.pickelstudio.com](http://www.pickelstudio.com)

Conrad Pickel Studio creates stained and faceted glass windows, mosaics and sculpture for religious and secular buildings throughout North America. Founded by the late Conrad Pickel, it is now under the direction of second-generation president Paul Pickel.

The studio's work may be seen in many of the finest churches, cathedrals and cemeteries. One commission, the Resurrection Mausoleum in Chicago, IL, is the world's largest stained glass window according to the Guinness Book of World Records.

## Cordeiro Vault Company, Inc.

281 Fifth Street, Vallejo, CA 94590  
(707) 552-1045, Toll Free: (800) 310-1045

Cordeiro Vault Company, a family owned company, is currently celebrating thirty years of operation under the leadership of Robert A. Cordeiro. Their company has an industry-wide reputation for providing top quality products and excellent service including the Doric Line of Protective Vaults. The Vice President of Sales has twenty-eight years of experience in the death care industry helping to assist our clients with memorial counselor training, vault display ideas, concepts for niche projects, and the daily problems that face cemetery management.

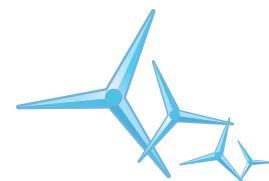
## CPRA Studio

CPRA specializes in all aspects of cemetery planning and design, as well as the creation of responsive cremation gardens, funeral home landscapes, and pet cemeteries and memorial gardens. The CPRA Alliance is a cooperative effort of many companies coming together to develop the most creative and innovative solutions for our clients.

## Doran and Mowry, LLC

1255 East Highland Avenue, #105, San Bernardino, CA 92404  
(909) 862-2173  
[www.doranandmowry.com](http://www.doranandmowry.com)

Doran and Mowry provide mapping of entire properties, amendments to existing maps, renderings, management consultants, cemetery management, cemetery broker services, and consultation with regard to compliance issues and developments.



### **Enderle Vault Company**

827 E. Florence Avenue, Inglewood, CA 90302  
(310) 674-3133  
[www.enderlevault.com](http://www.enderlevault.com)

Enderle Vault Company continues to maintain the prestigious heritage that was established in 1920. It is one of the leading manufacturers of burial vaults in the industry. They provide burial vaults, cremation vaults, concrete liners, single and double crypts.

Their years in the business speak for themselves. Enderle Vaults' mission is to provide the best products to its customers along with customer service, always recognizing the people who contributed to their success, because without them, Enderle Vault could not have succeeded.

### **Hartwick Combustion Technologies, Inc.**

8734 Clela Street, Unit A & D, Downey, CA 90241  
(562) 862-7444  
[www.hartwickcombustion.com](http://www.hartwickcombustion.com)

Hartwick Combustion Technologies, Inc. is a group of highly skilled professionals with a broad range of industry experience that have joined together under one common vision to deliver innovative design solutions to all aspects of the cremation industry. They are cremation experts who will listen and work with you to better understand your business needs and help you formulate an effective service strategy or develop a cremation system that meets your specific application.

### **Honor Life, Inc.**

955 Park Center Drive  
Vista, CA 92081  
(800) 585-5768  
[www.honorlife.com](http://www.honorlife.com)

Honor Life, Inc. specializes in the design and construction of recognition projects such as donor pavers and donor plaques, construction projects such as niche walls, niche and memorial gardens, pre-construction and onsite construction of columbaria, waterjet projects such as floor medallions and signage, as well as civic memorials.

### **Intera USA**

6621 Shelter Lane, Las Vegas, NV 89103  
(702) 839-0715  
[www.intera.us](http://www.intera.us)

As founders of the cemetery information kiosk for grave locations, Intera USA specializes in GIS mapping, archiving, scanning and conversion of historic records to database format. Intera scans all documents onsite to your records to never leave your property. With these images, they can then keypunch your information into corresponding fields in the CemOffice management software or format the database to fit your existing management system.

### **J. Stuart Todd, Inc.**

2919 Welborn, Suite 101, Dallas, Texas 75219  
(214) 522-4033  
[www.jstarchitects.com](http://www.jstarchitects.com)

The staff of J. Stuart Todd, Inc. is a multi-disciplinary team of architects, land planners, landscape architects, and interior design professionals. They bring a broad base of knowledge and experience to funeral directors and cemeterians across the country.

They are also members of the American Institute of Architects, Texas Society of Architects, The National Council of Architectural Registration Board, the Dallas Chapter of the American Institute of Architects, The American Society of Interior Design, and the International Cemetery and Funeral Directors Association.

### **Journeys Project Films/Vision4Media, Inc.**

633 S. Brea Blvd., Suite 205, Brea, CA 92821  
(714) 529-1600 or Keith Myers Direct (714) 870-6667  
[www.journeysproject.com](http://www.journeysproject.com)

Journeys Project Films, a Vision4Media, Inc. company, consciously addresses the most challenging aspects of our human life journey through the creation of motion pictures, documentaries, broadband internet and television programming. Journeys Project's award winning filmmakers produce engaging and entertaining media that enriches society by enlightening, educating and raising consciousness regarding meaningful issues of life. For the funeral industry, Journey Project offers its "Journey of Loss" DVD series – now the most acclaimed and award-winning grief-support films ever created – an ideal AfterCare gift. Journeys Project also produces high-quality, premium memorialization films and DVD's for select clientele.

### **Matthews International Corporation**

1315 West Liberty Ave., Pittsburgh, PA 15226  
(800) 628-8439  
[www.matthewsinternational.com](http://www.matthewsinternational.com)

Matthews is the world's leading producer of cast bronze memorial products. They offer a diverse collection of human and pet memorials. Whether you prefer traditional ground burial, mausoleum entombment or cremation, bronze is the perfect material for memorialization because it is a durable metal whose beauty lasts through the ages. And, only Matthews' bronze memorials and crypt letters have the patented Diamond Shield® Protective Finish.

### **McCleskey Mausoleums**

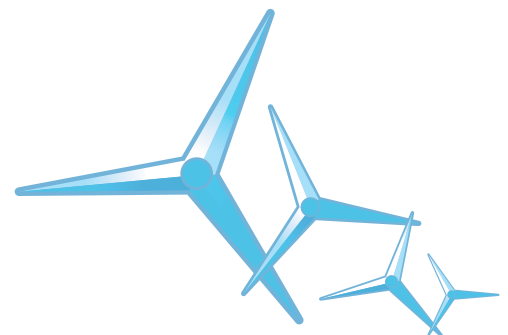
6244 Crooked Creek Road, Norcross, GA 30092  
(770) 447-9370  
[www.mccleskey.com](http://www.mccleskey.com)

Since 1961, McCleskey has been a trusted partner by responding to the needs and challenges of the cemetery industry. During this period, McCleskey has listened to and developed innovative concepts, and programs for our industry. In the current changing market, McCleskey will be creative in helping its partners by providing professionally designed and custom built mausoleums and memorial centers.

### **Memorial Business Systems, Inc.**

1889 General George Patton Drive, Suite 400, Franklin, Tn 37067  
(800) 844-4447  
[www.mbs-intl.com](http://www.mbs-intl.com)

As the oldest continuous company dedicated to deathcare specific software, Memorial Business Systems, Inc. has grown to become one of the largest suppliers in the industry. Currently they serve several hundred clients throughout the US, Canada, and Central America. Going beyond a pure software focus, MBS is also industry focused as shown by their membership and leadership in all levels of industry organizations worldwide. Their dedication to the industry and its members pushes MBS to offer an ever broadening, user centric solution set. MBS offers a software suite designed by members of the industry specifically for the industry.



### **Milne Construction**

PO Box 2740, Portland, CA 97208  
(503) 222-9836  
www.milneconstruction.com

Milne Construction provides mausoleum construction services. Milne also provides cemetery master planning services, design services separate from construction, construction management services, and construction of other types of cemetery buildings such as offices, funeral chapels, and columbaria (for cremation niches).

Milne Construction's 50 plus years of experience as a design/builder of quality memorial structures gives them the edge over firms that provide only design services.

### **Nickerson Insurance Services, Inc.**

2106 West Lomita Blvd., Lomita, CA 90717  
(310) 326-6333  
www.nickersonins.com

Nickerson Insurance Services, established in 1961, provides all lines of insurance to help coordinate and optimize coverage, services and costs.

They are an independent agency and will place your policy with the company offering the best coverage at a competitive rate. Personal attention and quick response reflects their focus on you.

### **Permeco**

1970 Walker Street, La Verne, CA 91750  
Mail: P.O. Box 337, La Verne, CA 91750  
(909) 599-9600  
www.permeco.com

Permeco is a designer, fabricator, installer and contractor of granite, marble, and travertine memorials and construction products. They are direct importers from producers around the world. Services include the materials and installation for mausoleums, columbaria, features, monuments, markers, memorials, statuary, benches, private estate mausoleums, entrance signs, crypt fronts, and granite bases. Permeco is a full service company with four generations of granite and marble background.

### **RJM Design Group, Inc.**

31591 Camino Capistrano  
San Juan Capistrano, CA 92675  
(949) 493-2600  
www.rjmdesigngroup.com

RJM specializes in cemetery analysis, planning, and cost/revenue estimating for potential development and/or renovation opportunities that enhance the ability for cemeteries to develop more efficient land use. Many public and private cemetery Board of Directors are faced with the prospect of purchasing land for expansion. RJM provides full master planning services for new projects, creating a comprehensive long-range development plan specific to the needs of each client and property variables.

### **State Compensation Insurance Fund**

2300 River Plaza Drive, Suite 150, Sacramento, CA 95833-2293  
(916) 263-7381  
www.scif.com

A workers' compensation insurance program designed for members of the Cemetery and Mortuary Association of California by the State Compensation Insurance Fund to provide the maximum value and stability to qualifying members. Innovative programs of medical cost containment, fraud prevention and loss control are among the services offered by the State Fund to its policy holders. Additionally, a 6% premium discount is available to all CMAC members. Along with individual and bonus dividend plans which have benefited our members for several years, these services and discounts can present a substantial savings.

### **Sun City Granite**

1270 W. Markham Street, Perris, CA 92571  
(951) 943-4966  
www.suncitygranite.com

Sun City Granite manufactures custom headstones, memorials, grave markers, monuments and tombstones at a high quality and a reasonable price. Sun City Granite was founded 15 years ago on a simple idea, "we can do that". Over the past years they have delivered thousands of headstones and monuments to many satisfied customers because they deliver the best personal service professionally and consistently.

### **Universal Supplies**

7650 E. Fay Avenue, Mesa, AZ 85208  
(480) 928-0025

### **Vantage Products Corporation**

960 Almon Road, Covington, GA 30014  
(800) 481-3303  
www.vantageproducts.com

Vantage Products Corporation was founded in 1978. Initially, a manufacturer of custom parts, door skins and burial vaults, the company grew rapidly and over time dropped other products to focus on the funeral products industry. Vantage owns huge injection molding machines which can adapt to unique applications, ideal for the funeral products industry.

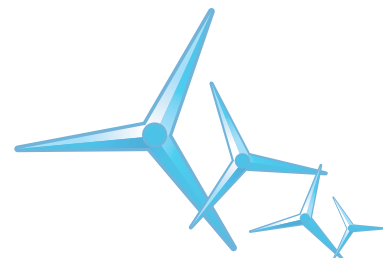
Vantage is now located and headquartered in a new, state-of-the-art 100,000 square foot facility in Covington, GA. The facility is home to two new injection molding machines, robotic painting systems, R & D, as well as ample storage and shipping facilities.

### **William G. Hynek, ASLA, Landscape Architect**

16 Brentano Drive, Coto de Caza, CA 92679  
Email: William.G.Hynek@gmail.com

The firm of William G. Hynek, Landscape Architect, provides professional services in landscape architecture focusing on memorial parks in the planning and design of numerous successful cemetery projects including more than forty-two projects at the world's largest memorial park. These projects include a variety of cemetery inventory such as private and semi-private family areas, Westminster crypts, standard lawn graves, garden urns, niche walls, and scattering areas all within a garden setting. The firm's design services include master plans, burial section and cremation garden plans, capacity analysis, cemetery market research, site work construction plans with specifications and cost estimates, planting plans, interment space recovery for older cemeteries, mapping, consultation, and cemetery construction management. Each project is unique and thoroughly researched. The owner's needs, site conditions, environment, orientation, costs, sales, religious and cultural needs are included in the design analysis.

With a Master's Degree in Landscape Architecture and twenty seven years of experience in private practice working with cemeteries and other public and private facilities, William G. Hynek, Principal, and his firm are well qualified to assist you with all memorial park projects. Since the firm's inception, projects have been completed in eleven states. Through research and creative planning, we help memorial parks develop the correct inventory, in the proper location, planning for today and the future.



# CMAC 2008 Spring Conference Attendees

## Alexander Studio

22267 Buena Ventura St.  
Woodland Hills, CA 91364  
(818)779-7611  
mosaicart@yahoo.com  
Alexander Mandradjiev  
Daniela Mandradjiev

## Alta Mesa Memorial Park Cemetery

695 Arastradero Road  
Palo Alto, CA 94306  
(650) 493-1041  
mtalbot@altamesacemetery.com  
Marilyn Talbot  
Kurt Talbot

## American Crematory Equipment Co., Inc.

9823 S Arlee Street  
Santa Fe Springs, CA 90670  
(562) 777-0023  
john@americancrematory.com  
John Raggett  
Mike Burwell

## Arcadian Memorial Products

(Formerly Quick Crete Products Corp.)  
PO Box 639  
Norco, CA 92860  
(866) 580-7461  
dhepburn@arcadianmp.com  
Dave Hepburn  
Bobbi Hepburn  
Fred Crook  
Rick Crook

## ASCO Pacific Supply

25222 Broadwell Avenue  
Harbor City, CA 90710  
(800)521-1113  
ascopacific@pacbell.net  
Patrick Connealy

## Bellevue Memorial Park

1240 West G Street  
Ontario, CA 91762  
(909) 986-1201  
randyinlow@gmail.com  
Randy Inlow

## Catholic Cemeteries – Archdiocese of Orange

2811 E. Villareal Drive  
Orange, CA 92867  
(714) 919-1610  
mwesner@rcbo.org  
Michael Wesner

## Cemetery and Funeral Bureau

Riverside Field Office  
P.O. Box 611  
Calimesa, CA 92320  
(909) 446-0134  
Daniel\_Redmond@dca.ca.gov  
Dan Redmond

## Cemetery and Mortuary Association of California

925 L Street, Suite 220  
Sacramento, CA 95814  
(916)441-4166  
cmac@usa.net  
Jerry Desmond, Jr.  
Anne Schillig

## Christy Vault Co.

1000 Collins Ave.  
Colma, CA 94014  
(800)229-8285  
khendricks@christyvault.com  
halwilkes7@aol.com  
Kirk Hendricks  
Hal Wilkes

## Cold Spring Memorial Group

202 South Third Avenue  
Cold Spring, MN 56320  
(800)328-5040  
dpetermeier@coldspringgranite.com  
Dave Petermeier  
Lisa Bijold

## Commerce Holding Company, Inc.

PO Box 333  
Colma, CA 94014  
(650) 755-6939  
sdouk@aol.com  
Steve Doukas  
Tammy Buckley  
Suzi Burnett  
Rick LaBare

## Conrad Pickel Studio, Inc.

418 I Avenue  
Coronado, CA 92118  
P.O. Box 182071  
Coronado, CA 92178  
(619) 435-2106  
thara@san.rr.com  
Todd Hara

## Cordeiro Vault Company

281 5th Street  
Vallejo, CA 94590  
(800) 310-1045  
Bob Cordeiro  
Gloria Cordeiro

## CPRA Studio

(Cemetery Planning Resource Alliance)  
7921 SouthPark Plaza, Suite 106  
Littleton, CO 80120  
Ed Ossello

## Crystal Cathedral Memorial Gardens

12141 Lewis St.  
Garden Grove, CA 92840  
(714)971-4011  
Marcia@crystalcathedral.org  
Marcia Nixon  
Alma Quinones

## Cypress Lawn Cemetery Association

1370 El Camino Real  
Colma, CA 94014  
(650) 755-0580  
kvarner@cypresslawn.com  
bdryg@cypresslawn.com  
Ken Varner

## Desert Lawn Memorial Park

PO Box 485  
Calimesa, CA 92320  
(909) 795-2451  
aperisits@aol.com  
Angie Perisits  
Dee Anderson

## Doran and Mowry, LLC

1255 E. Highland Avenue, #105  
San Bernardino, CA 02404  
(909)883-0234  
Karen A. Doran  
Ron Mowry

## Enderle Vault Co.

827 E. Florence Avenue  
Inglewood, CA 90302  
(310) 420-4808  
octsalas@netscape.net  
Octavio Salas, Jr.

## Fairhaven Memorial Park

1702 Fairhaven Avenue  
Santa Ana, CA 92705  
mnoel@fairhavenmemorial.com  
Marla Noel

## Forest Lawn Memorial - Parks & Mortuaries

1712 S. Glendale Avenue  
Glendale, CA 91205  
(323)340-4698  
jllewellyn@forestlawn.com  
ldavis@forestlawn.com  
ddrabling@forestlawn.com  
sdrolet@forestlawn.com  
John Llewellyn  
Carol Llewellyn  
Larry Davis  
Darin Drabling  
Scott Drolet  
Suzanne Davidson  
Dennis Madison

## Green Hills Memorial Park

27501 S. Western Avenue  
Rancho Palos Verdes, CA 90275  
(310) 832-2618  
jresich@aol.com  
dlane@ghpark.com  
John Resich, Jr.  
Dennis Lane

## Greenlawn Mortuary & Cemetery

3700 River Boulevard  
Bakersfield, CA 93305  
(661)324-9701  
Gayland Smith

## Harbor Lawn – Mt Olive Memorial Park & Mortuary

1625 Gisler Avenue  
Costa Mesa, CA 92626  
(714)540-5554  
lynn.stucker@sci-us.com  
Lynn Stucker

## Hartwick Combustion Technologies, Inc.

8734 Clela Street, Unit A  
Downey, CA 90241  
(800) 816-9125  
hartwickcombustion@charter.net  
Peter Hartwick  
Deanna Tae Toro

## Holy Sepulcher Cemetery

7845 Santiago Canyon Road  
Orange, CA 92869  
(714) 532-6551  
khaynes@rcbo.org  
Kevin Haynes

## Home of Peace Cemetery/Hills of Eternity Memorial Park

1299 El Camino Real  
Colma, CA 94014  
(650) 755-4700  
jedmonson@emanuelsf.org  
Judy Edmonson

## Honor Life Inc.

955 Park Center Drive  
Vista, CA 92081  
(800) 585-5768  
F:(760) 598-8242  
sales@honorlife.com  
Sean Godknecht

## Inglewood Park Cemetery

720 E. Florence Avenue  
Inglewood, CA 90301  
(310) 412-6500  
kbrown@ipcmail.org  
Kevin Brown  
Cynthia Brown  
Daniel Villa  
Rosemary Villa

## Intera USA

6621 Shelter Lane  
Las Vegas, NV 89103  
(707) 839-0715  
tavi@intera.us  
Tavi Gherman

## Ivy Lawn Memorial Park

5400 Valentine Road  
Ventura, CA 93003  
(805) 642-1055  
Ivylawnmemorial@cs.com  
Terri Gonzalez

## J. Stuart Todd, Inc.

2919 Welborn, Suite 101  
Dallas, Texas 75219  
(214) 522-4033  
ksikes@jstarchitects.com  
Barry Boudreaux

**Journeys Project Films/  
Vision4Media, Inc.**

633 S. Brea Blvd., Suite 205  
Brea, CA 92821  
(714) 529-1600  
kgmyers@journeysproject.com  
Keith G. Myers

**Krause Funeral Home &  
Cremation Services, Inc.**

9000 West Capitol Drive  
Milwaukee, WI  
(414) 464-4640  
mark@krausefuneralhome.com  
Mark Krause

**Matthews International - Bronze  
Division**

1315 West Liberty Avenue  
Pittsburgh, PA 15226  
(951) 526-5288  
ray@matthewsintl.com  
ray@matw.com  
Ed Dvorak  
Squeek Dvorak  
Ray Ortner  
Tom Ohnstad  
Angie Ray  
Erik Ray

**McCleskey Mausoleums**

6244 Crooked Creek Road  
Morcross, CA 30092  
(770) 447-9370  
bobdebeltrand@mccleskey.com  
Robert DeBeltrand  
Sonia DeBeltrand  
Mark Simon  
Kim Tadlock

**Memorial Business Systems, Inc.**

1889 General George Patton Dr., Suite  
400  
Franklin, TN 37067  
(800) 844-4447  
fmiller@mbs-intl.com  
Fred Miller

**Milne Construction**

PO Box 2740  
Portland, OR 97208  
(503) 222-9836  
ddahl@milneconstruction.com  
David Dahl

**Mountain View Cemetery  
Association**

5000 Piedmont Avenue  
Oakland, CA 94611  
(510) 658-2588  
jeff@mountainviewcemetery.org  
Phil@mountainviewcemetery.org  
Jeff Lindeman  
Phil Freitas  
Jerry Johansen

**Mountain View Cemetery &  
Mortuary**

2400 N. Fair Oaks Avenue  
Altadena, CA 91001  
(626)794-7133  
advplan@pacbell.net  
Gerald Nash  
Carolyn Nash

**Mountain View Mortuary &  
Cemetery**

570 E. Highland Avenue  
San Bernardino, Ca 92404  
(909) 882-2943  
robert.hinze@sci-us.com  
Robert A. Hinze

**Mt. Eden Cemetery Association**

2440 Derot Road  
Hayward, CA 94545  
(510) 427-9057  
lindampaulh@msn.com  
Linda Millistefr  
Paul Haavik

**Nickerson Insurance Services**

2106 West Lomita Blvd.  
Lomita, CA 90717  
(310) 326-6333  
Robert@nickersonins.com  
Robert Takata

**Olivewood Memorial Park**

3300 Central Avenue  
Riverside, CA 92506  
(951)683-6611  
olivewoodcem@earthlink.net  
Sandi Ross

**Permeco**

1970 Walker Street  
La Verne, CA 91711  
(909) 599-9600  
mark@permeco.com  
Mark Carson

**RJM Design Group, Inc.**

31591 Camino Capistrano  
San Juan Capistrano, CA 92675  
(949) 493-2600  
rjm@rjmdesigngroup.com  
Eric Chastain  
Craig Sensenback

**Roosevelt Memorial Park and  
Mortuary**

18255 S. Vermont Avenue (P.O. Box 19)  
Gardena, CA 90248  
(310) 329-1113  
roosmem@pacbell.net  
Kathleen A. McLaughlin

**Rose Hills Company**

3888 S. Workman Mill Road  
Whittier, CA 90601  
(562) 892-1212  
mrmefford@rosehills.com  
kent.woods@rosehills.com  
Merrill Mefford  
Kent Woods  
Patrick Monroe  
Dave Worker

**SCI – California Funeral Services**

14801 Beach Blvd.  
Westminster, CA 92683  
(714) 889-1055  
steve.schacht@sci-us.com  
Steve Schacht

**San Gabriel Cemetery  
Association**

601 W. Roses Road  
San Gabriel, CA91775  
(626) 282-2764  
gayle@sangabrielcemetery.com  
Gayle MacGregor

**Santa Barbara Cemetery**

901 Channel Drive  
Santa Barbara, CA 93108  
(805) 969-3231  
rthwing@sbcemetery.org  
Randy Thwing

**Sun City Granite**

1270 W. Markham Street  
Perris, CA 92571  
(951) 943-4966  
suncitygranite@yahoo.com  
Joe Mehochko

**Tulocay Cemetery Association**

411 Coombsville Road  
Napa, CA 94559  
(707) 252-4727  
peterm@saber.net  
Peter Manasse  
Sandy Manasse

**Turlock Memorial Park & Funeral  
Home**

425 N. Soderquist Road  
Turlock, CA 95380  
(209) 632-9111  
satherton@turlockmemorialpark.com  
Scott Atherton

**Universal Supplies**

7650 E. Fay Avenue  
Mesa, AZ 85208  
(480) 928-0025  
Grace Szayer

**Valley Memorial Park**

650 Bugeia Lane  
Novato, CA 94945  
(415) 897-9609  
gbestes@valleymemorialpark.com  
George B. Estes  
Raye-Lee Estes

**Vantage Products**

960 Almon Road  
Covington, GA 30014  
(770) 788-0136  
John Love

**William G. Hynek, ASLA,  
Landscape Architect**

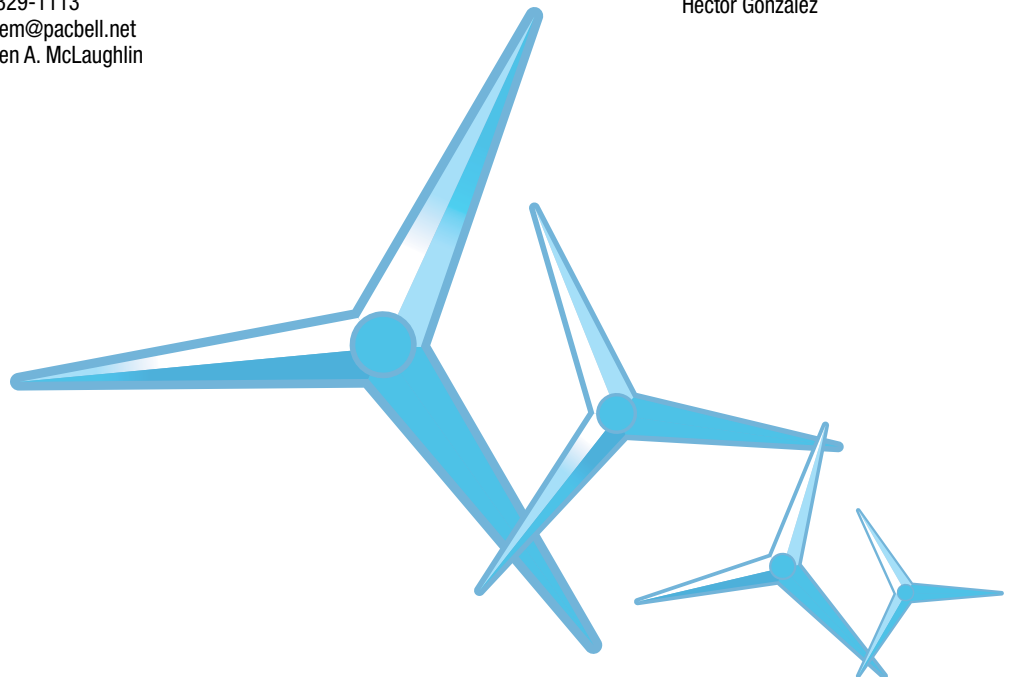
16 Brentano Drive  
Coto de Caza, CA 92679  
William.G.Hynek@gmail.com  
William Hynek  
Sue Hynek

**William McKinley Presidential  
Library & Museum**

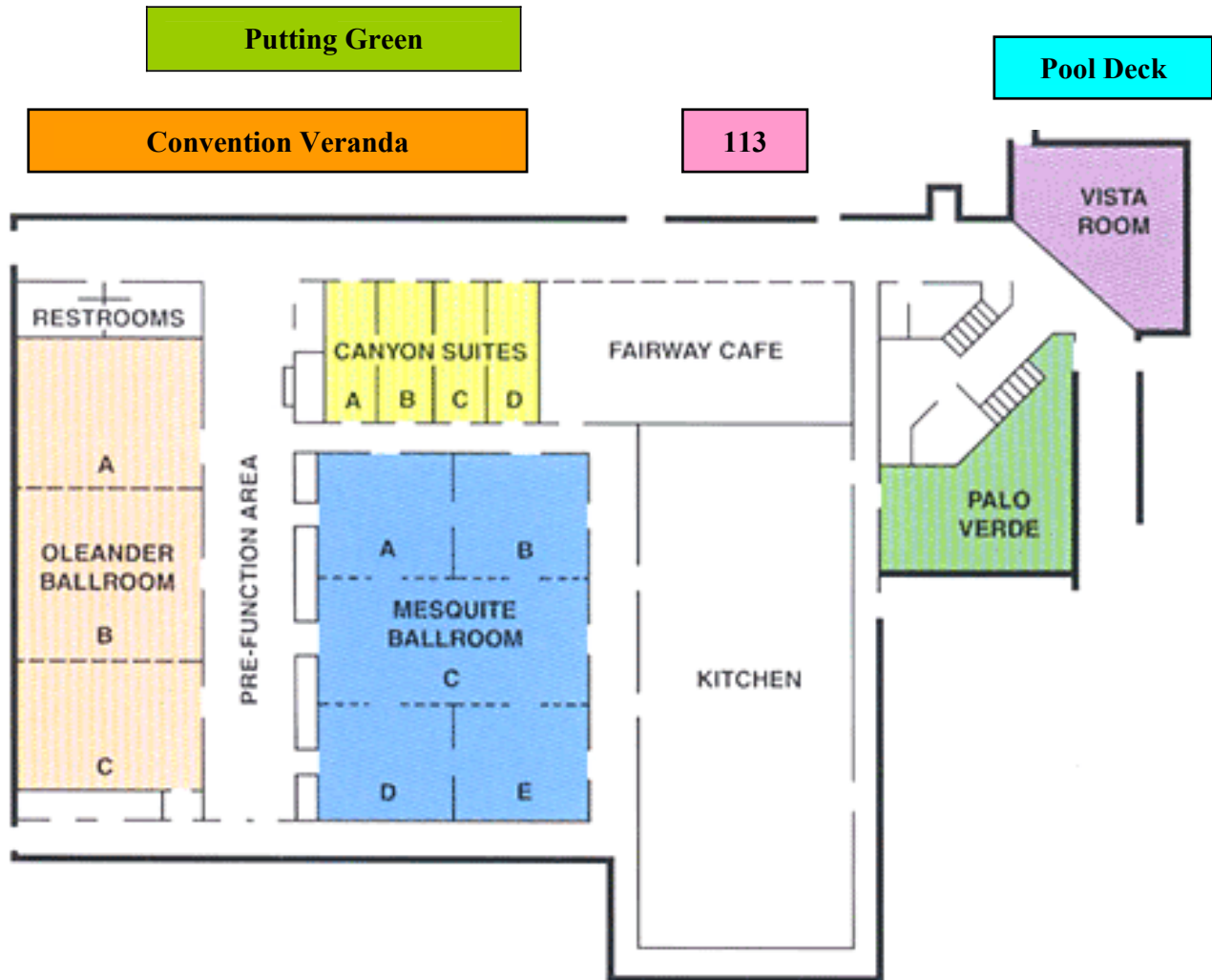
800 McKinley Monument Drive NW  
Canton, OH 44708  
(330) 455-7043  
Kimberly Kenney  
curator@mckinleymuseum.org

**Woodlawn Memorial Park**

1000 El Camino Real  
Colma, CA 94014  
(650) 755-1727  
Margaret Hambrick  
Hector Gonzalez



# Doral Desert Princess Resort Palm Springs



**Cemetery and Mortuary Association of California**

925 L Street, Suite 220, Sacramento, CA 95814

P 916.441.4533 • F 916.441.3520 • E [cmac@usa.net](mailto:cmac@usa.net)

[www.CMACcalifornia.org](http://www.CMACcalifornia.org)